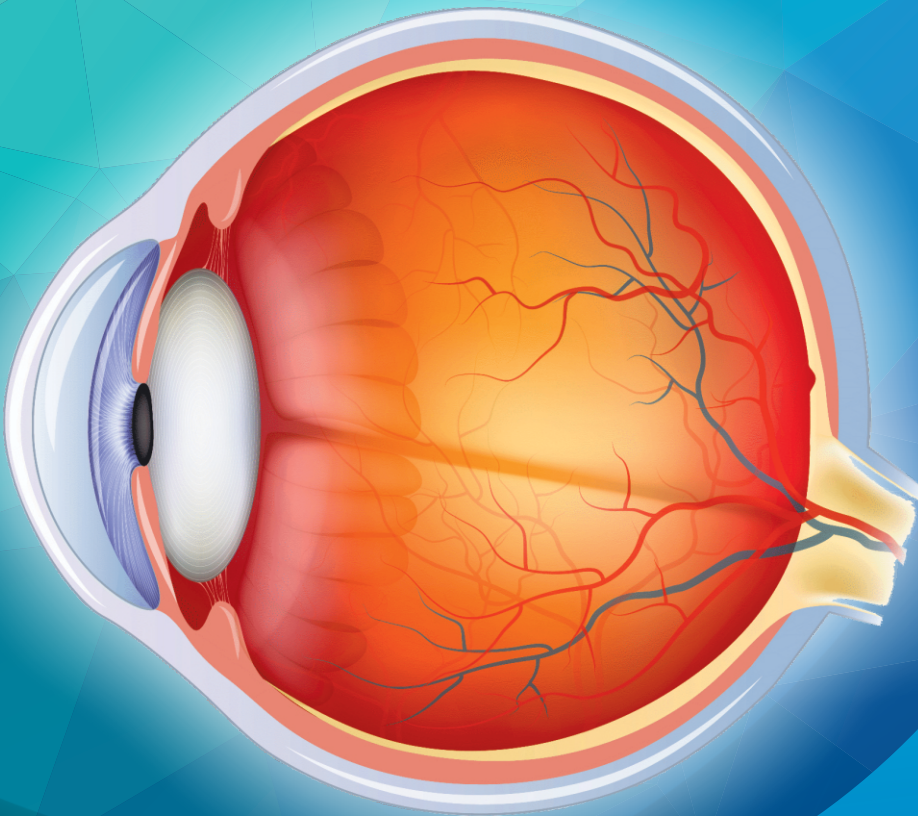




Smart Eye

THE ANATOMICAL EYE MODELS
AND COUNSELLING TOOLS



Manufactured and Marketed By:



SMR OPHTHALMIC PVT. LTD.

209, Linkway Estate, Link Road, Malad West, Mumbai - 400 064. Maharashtra, India.

Tel.: (+91) 22 6695 0141 / 44 / 43 / 44 • Mob.: +91 98670 17429

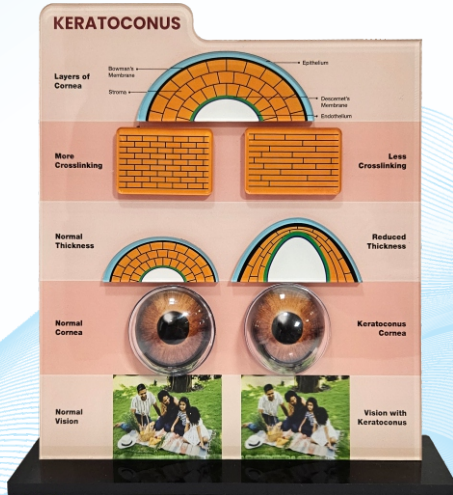
E-mail: sales@smrindia.com • Website: www.smrindia.com

SMR OPHTHALMIC is glad to introduce a range of premium quality anatomical eye models and counselling tools for use of doctors, eye-care professionals and students. These are cross section eye models depicting all key anatomical features of a natural human eye like the cornea, iris, sclera, choroid, ciliary body, retina and the natural crystalline lens. Each of the eye model comes with a base mounting stand with cavities to hold the different lenses.

There are 19 different Eye models & Counselling tools we have tried to develop:

01 Keratoconus Counselling Tool

This informative counselling tool helps a practitioner to explain the patients about various aspects of Keratoconus disease. It has information on Layers of cornea, the reduced crosslinking of stroma, changing shape of cornea, sample pictures to depict normal and Keratoconus vision, stages of Keratoconus progression and treatment options for Keratoconus.



Product Box Dimension:

L-28cm W-7cm H-31cm

Product Weight:

950 grams

02 Lasik Counselling Tool

This table top information tool helps the Doctors / Medical Practitioners to explain to their refractive patients about their current refractive error, the steps involved in the Lasik procedure and post-operative outcome.



Product Box Dimension:

L-28cm W-7cm H-31cm

Product Weight:

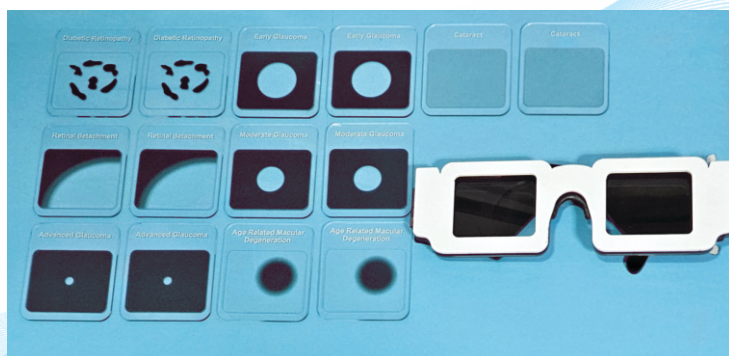
900 grams

03 Vision Simulation Tool

This new model will help Doctors to explain the caregiver of the patient to actually check the visual experience of the patients with the following 4 diseases:

- Cataract
- Glaucoma (Mild, Moderate and Advanced)
- Diabetic Retinopathy
- Retinal Detachment

The kit comes with a pair of Glass holder and slides for each of the above diseases.



Product Box Dimension:

L-30cm W-20cm H-06cm

Product Weight:

750 grams

04 Cataract & IOL Counselling Tool

This tool gives a 2D diagram of Eye anatomy with clear and cataract lens differentiation. Also it has 2D designs of different types of cataracts. The other side of the tool has options of different types of Intraocular lenses that are commonly used along with the vision benefits



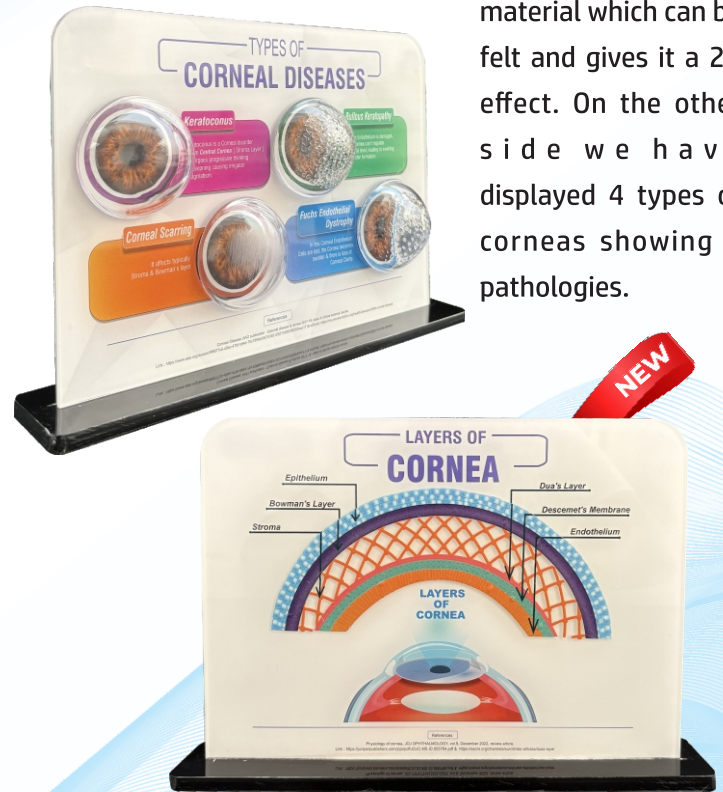
Product Box Dimension:
L-29cm W-21cm H-8.5cm

Product Weight:
570 grams

05 Layers of Cornea and Corneal Disease Counselling Tool

Using this counselling tool an ophthalmologist can better explain to a patient about the various layers of cornea which we have tried to depict on one side of the tool using a textured material which can be felt and gives it a 2D effect.

On the other side we have displayed 4 types of corneas showing 4 pathologies.

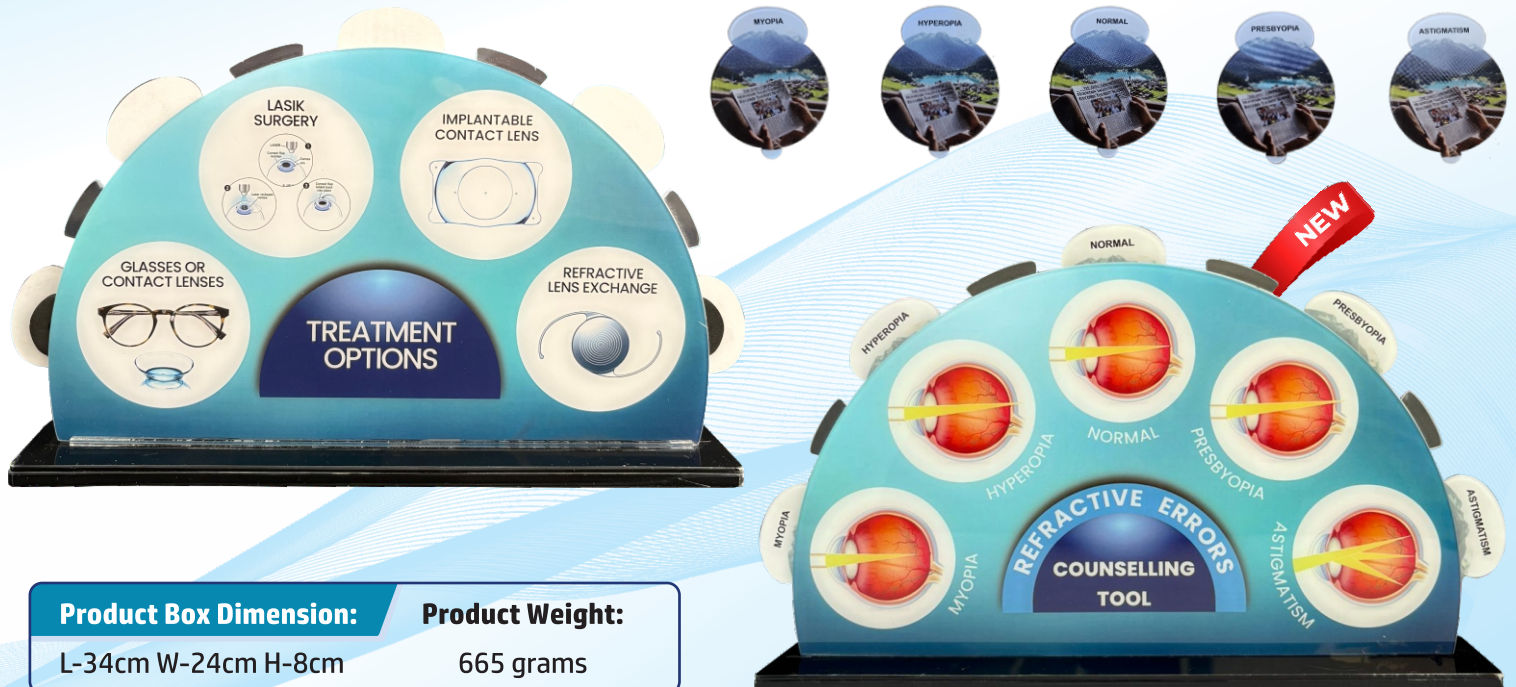


Product Box Dimension:
L-32cm W-23cm H-9.5cm

Product Weight:
765 grams

06 Refractive Errors Counselling Tool

This new Tool helps to demonstrate the various kinds of Refractive errors and how the vision would change the way we see with each of these errors. On the other side of the tool it gives various options available to correct this problem with doctor's advice.



Product Box Dimension:
L-34cm W-24cm H-8cm

Product Weight:
665 grams

07 Cataract and IOL Counselling Kit

This unique counselling kit is a must have tool for all practioners. It contains 4 capsules showing :

- Clear capsular bag before cataract
- Clouded capsular bag after cataract
- Capsular bag with CCC
- Capsular bag with IOL implanted

In addition it will have 4 different types of dummy IOL to depict commonly used IOLs like

- Monofocal
- Toric
- Yellow
- Multifocal

It also has a information flap which explains the comparative vision advantage of different types of IOLs



Product Box Dimension:

L-25cm W-17cm H-06cm

Product Weight:

560 grams

08 Premium IOL Counselling Tool

This is a counselling tool which will enable a counsellor to explain the patient the different steps involved in a cataract surgery and the choice of premium lenses available along with the expected visual outcome using the same.

This tool comes with 3 Capsular Lenses as follows:

- Clouded capsular bag after cataract
- Capsular bag with CCC
- Capsular bag with IOL implanted

It also contains different types of dummy Intraocular lenses:

- EDOF
- EDOF Toric
- Trifocal
- Trifocal Toric
- Premium Monofocal

Also, an information flap is provided which gives comparison of different visual outcomes in each of the above mentioned IOLs.



Product Box Dimension:

L-30cm W-20cm H-06cm

Product Weight:

700 grams

09 Tear Film Model

This innovative model depicts 3 layers of tear film namely Lipid, Aqueous and Mucin layer. Each of the layers can be separated while explaining to the patient. The back flap of this model gives more information on the tear film.



Product Box Dimension:

L-21cm W-17cm H-09cm

Product Weight:

480 grams

10 Glaucoma Eye Model

THIS GLAUCOMA EYE MODEL helps a doctor / counsellor to very clearly explain to their patient the difference between open angle and closed angle glaucoma. There are two eye ball structure on the base plate. One eye ball structure shows open angle where angle can be clearly seen and other structure doesn't have angles visible depicting angle closure glaucoma.



Product Box Dimension:

L-21cm W-17cm H-09cm

Product Weight:

420 grams

11 Cornea Eye Model

This Cross sectional eye model shows the general eye anatomy. In addition it focuses on corneal conditions. They Includes 4 interchangeable corneas that show those cornea conditions as follows:

- a. Bullous keratopathy,
- b. Fuch's endothelial dystrophy
- c. Keratoconus
- d. Normal Cornea

The base stand provides labelled slots to keep these 4 Corneas. In addition we also provide a prefixed Clear lens in the globe. This Model is very useful for a Doctor to explain the patient, the difference between a normal cornea and one of those conditions.

Contents: Cross sectional eye ball, 4 type of Corneas, Lens, Informative Back Flap, Base stand with eye Ball Mounting Rod.



Product Box Dimension:

L-19cm W-17cm H-14cm

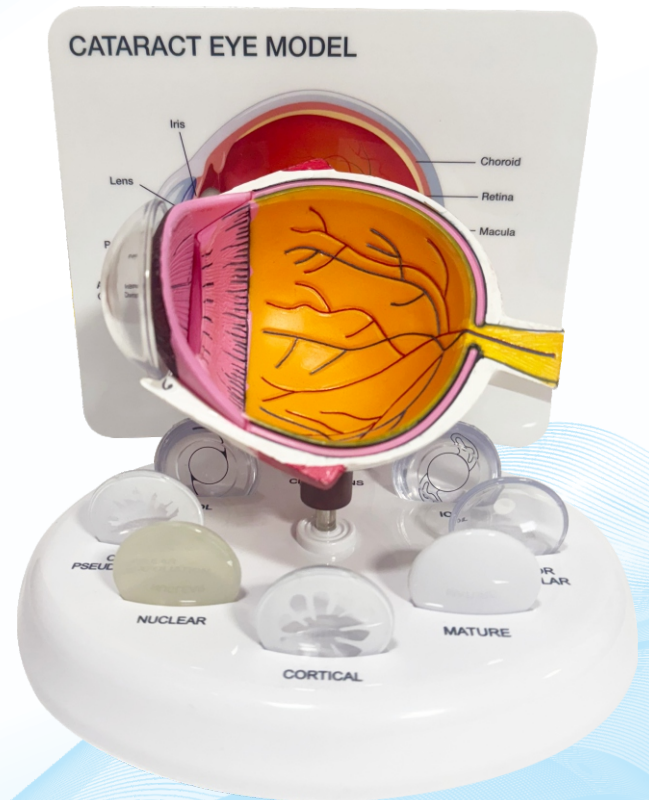
Product Weight:

710 grams

12 Cataract Eye Model

This anatomical model shows the various types of cataract conditions. This helps easy explanation and demonstration of various types of cataracts and how the capsular retractor (CCC) shall be made during the surgery to implant the IOL. This model includes 8 interchangeable lenses, which are labelled and stored in the display base as given below:

- Crystalline lens without Cataract
- Subcapsular Cataract
- Capsular Cataract
- Mature Cataract
- Cortical Cataract
- Nuclear Cataract
- Lens with CCC and IOL - type 1
- Lens with CCC and IOL - type 2



Product Box Dimension:

L-21cm W-17cm H-09cm

Product Weight:

450 grams

13 Dry Eye Model

This unique eye model helps to make patients understand various aspects related to Dry eye right from fluorescein staining on the cornea, lissamine green staining on the sclera, meibomian gland dysfunction (comparison between healthy and unhealthy Meibomian glands), lacrimal gland dysfunction, and the lacrimal punctum. It has a Tear film too over the cornea with clear demarcation of 3 layers of Tear Film (Mucin, Aqueous and Lipid). One can explain using the back Flap and model, significance of each layer of Tear Film from where the fluids are secreted and the patient specific problems of Dry eye. The back flap also gives information on various options available for treating the Dry eye.



Product Box Dimension:

L-21cm W-17cm H-09cm

Product Weight:

420 grams

14 New Retina Disease Eye Model

This new model has a cross-sectional eye ball along with 5 interchangeable coasters depicting following 5 retinal diseases as per pathology.

- Normal Retina
- Dry ARMD
- Wet ARMD
- Proliferative Diabetic Retinopathy
- Non-Proliferative Diabetic Retinopathy



Product Box Dimension:

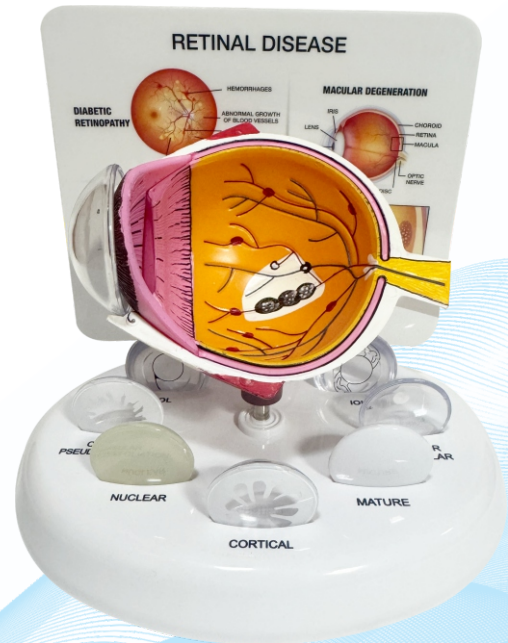
L-21cm W-17cm H-10cm

Product Weight:

610 grams

15 Retinal Disease Eye Model

This eye model tries to tackle 3 of the most common diseases and assist the ophthalmic specialists to educate their patients on 3 diseases which are Glaucoma, AMD and Diabetic Retinopathy. It shows the patients what the disease looks like and the harm it can cause to the eye. It allows the specialists to discuss eye related issues with the patients and ease out the patient's doubts.



Product Box Dimension:

L-21cm W-17cm H-09cm

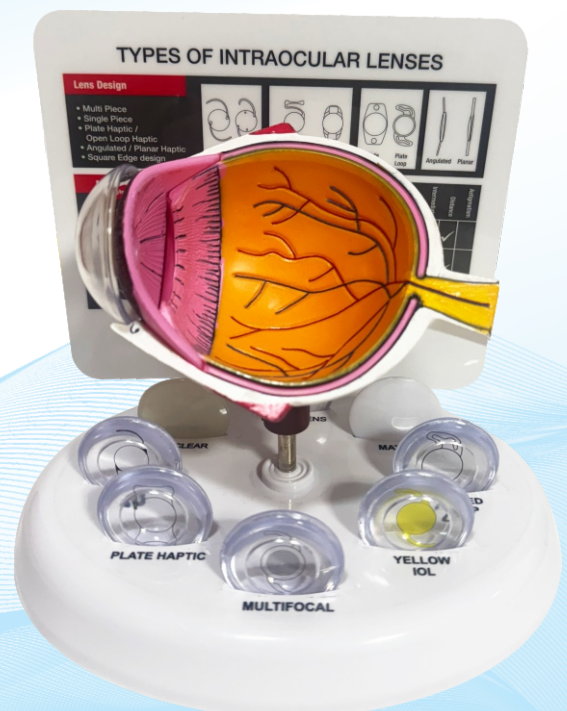
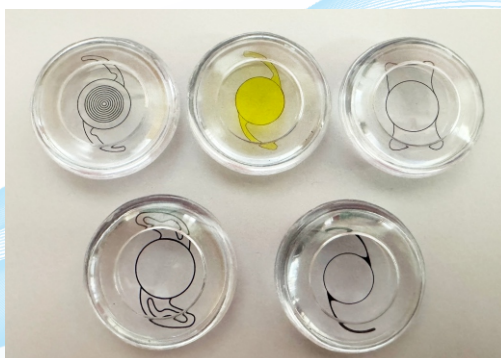
Product Weight:

450 grams

16 IOL Eye Model

This eye model is specifically designed for cataract patients and their relatives for education and counseling. It helps to ease the patient's vagueness or doubts with demonstration. It will also help in selection of the right IOL by the patient. The model has 8 types of interchangeable lenses depicting the following:

- Crystalline lens without Cataract
- Mature Cataract Lens
- Nuclear Cataract
- C Loop IOL
- Modified Haptic IOL
- Plate Haptic
- Multifocal IOL
- Yellow IOL



Product Box Dimension:

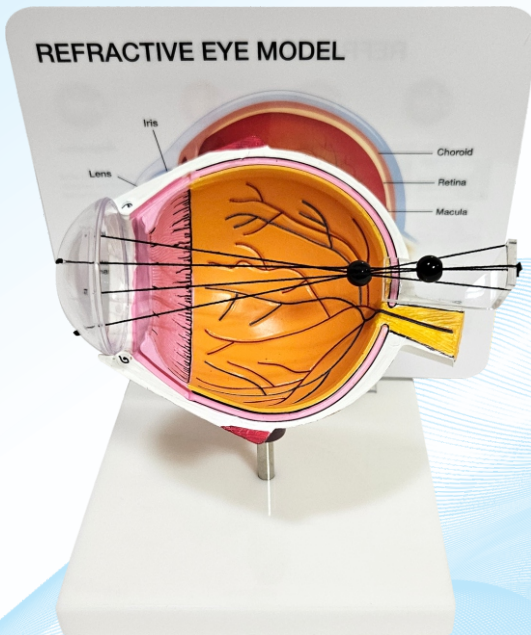
L-21cm W-17cm H-09cm

Product Weight:

470 grams

17 Refractive Eye Model

Patients at times find it difficult to understand the different types of refractive errors like astigmatism, myopia and hyperopia. This model dynamically depicts how the focal length of the eye is changed by lens correction for better sharpness.



Product Box Dimension:

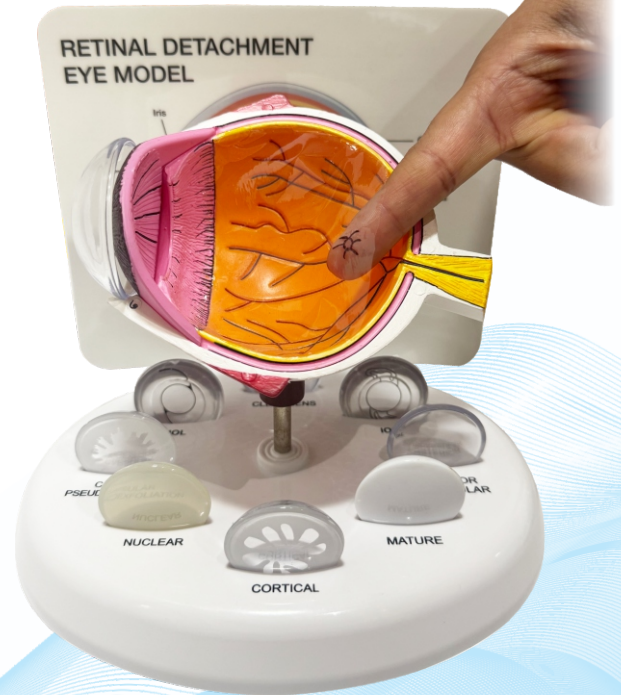
L-19cm W-17cm H-14cm

Product Weight:

620 grams

18 Retinal Detachment Eye Model

The eye model is mounted with a clear film on the back which is used to help illustrate retinal detachment. This is made of durable plastic and shows the eye in full color.



Product Box Dimension:

L-21cm W-17cm H-09cm

Product Weight:

450 grams

19 Full Globe Eye Model

This eye model comes with all components of a Normal human eye. It consists of 2 parts of the eye Globe with depiction of all the muscles of the eyes and the internal structure like the Fundus, Optic disc, Optic nerve, Ciliary body. In addition it also consists of a Clear lens, Iris, Cornea and Vitreous Body. This all in one eye model can be an excellent tool for teaching, counselling and demonstration purpose.

Contents: 2 Halves of the eye globe, Cornea, Lens, Iris, Vitreous body, Base stand with Eye Ball Mounting Rod.

Product Box Dimension:

L-21cm W-17cm H-09cm

Product Weight:

650 grams

